

High Temperature Black Body Furnace

Wide Temperature Range

Calsys 1700BB offer a wide temperature range from 500 °C to 1700 °C

Simple to use

The Calsys 1700BB block is ideal for Industrial/ Laboratory field use. It is simple enough to testing and calibration uses.

Speed

The Calsys 1700BB extremely quick to reach various temperatures. This saves time and increases productivity.

Accuracy and performance

The Calsys 1700BB provides excellent calibration accuracy with stability $\pm 1.5^{\circ}\text{C}$ at 1700 °C.

Accredited calibration

Each Calsys 1700BB is delivered with an accredited calibration certificate.

Computer Interface

The communication port (RS-232) enables communication with selected Calsys 1700BB calibrators for automation calibration and documentation thus it made documentation easy.

Calsys 1700BB

Highly Accurate Temperature Calibrator For Industrial / Laboratory Field Use



CALsys 1700BB offers easy to use blackbody calibrator with high temperature range from 500 to 1700°C. It is a highly stable standard furnace for calibrating pyrometer and non contact sensor. This calibrator can be used on site for high temperature calibration and also find application in pyrometer industry, non contact sensor calibration.. The unique feature of this black body furnace is large temperature control black body target of 29mm diameter. The temperature of the calibrator is set and controlled by a self tuned PID controller with automatic super fine adjustment. Our newly designed CALsys 1700BB model offers better esthetic design and performance wise upgraded to next level.

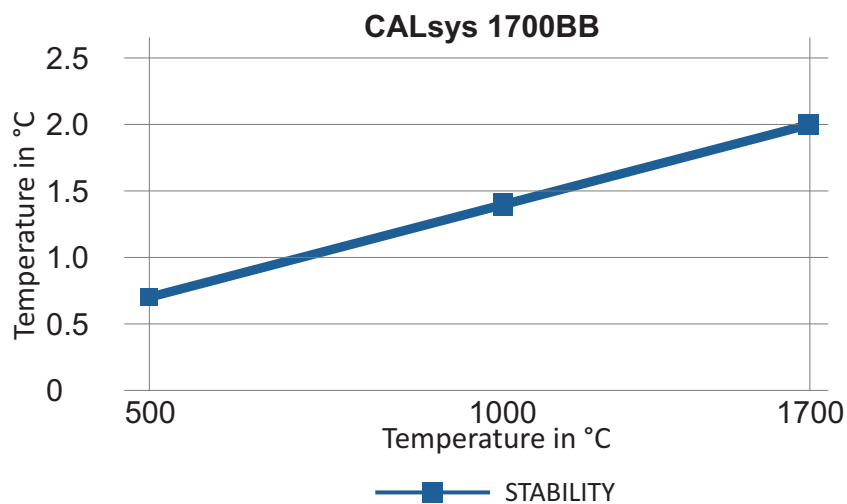
Tempsens make Temperature Calibrator extremely effective instrument which we hope will live up to all your expectations. This is a fast, timesaving, and reliable true industrial temperature calibrator designed for on-site use.

During the past several years, we have acquired extensive knowledge of industrial temperature calibration. This expertise is reflected in our products which are all designed for daily use in an industrial environment.

SPECIFICATIONS

Temperature range	500 °C to 1700 °C
Stability	±0.5°C at 500°C
	±1.0°C at 1000°C
	±1.5°C at 1700°C
Stabilization time	15 to 20mins
Controlling sensor	B type duplex(PT/RH-PT)
Cavity type	ceramic
Cavity dimension	29mm End closed tube
Emissivity	0.97 (±0.02)
Heater	MoSi
Heating time	3 Hrs
Method of control	Digital self tuned PID Controller
Resolution	1 °C
Display	LCD, °C or °F user-selectable
Size (H x W x D)	700(H) x 500(W) x 550(D) mm
Weight	130Kg (Overall)
Power requirements	230 VAC 50/60Hz
Computer interface	RS - 232
Calibration	Accredited calibration certificate provided (Optional)
Environmental operating conditions	0 °C to 40 °C, 0 % to 90 % RH (non-condensing)
Specifications valid in environmental conditions	13 °C ... 33 °C

STABILITY OF CALSYS 1700 BB



Access Opening 1700BB

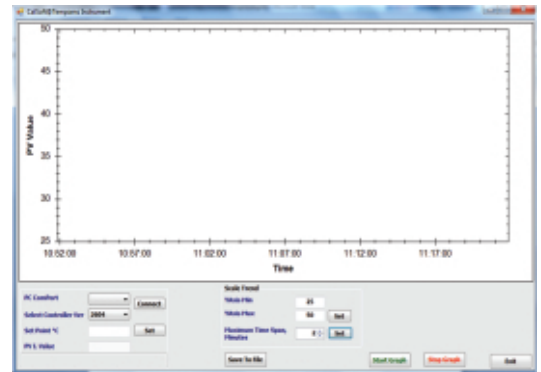
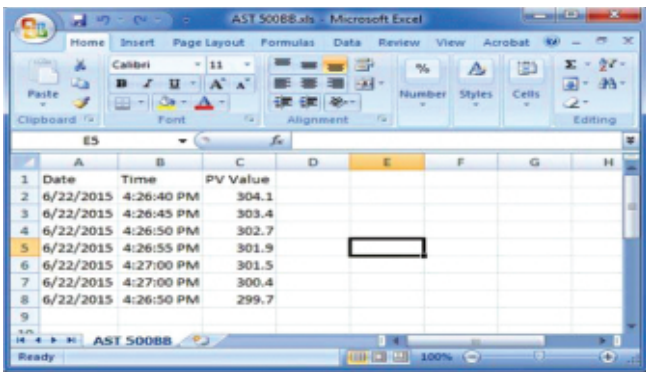
Blackbody Cavity for CALsys 1700BB models

We use 29mm dia End closed tube (Radiation cavity type) in CALsys 1700BB. We also offer customized access opening based on Customer requirements.



Ceramic Cavity

SOFTWARE



- CalSoft including for setting bath temperature and monitoring the PV. Graphical representations of PV/TIME with 2 hours data logging.

MASTER SENSOR (OPTIONAL)

- Mater pyrometer



- Black Body Cavity..... Part No. Eq3
- NABL accredited calibration certificate - 3 points (Optional)
- Operational Manual